

ASPEN INSTITUTE ASCEND NETWORK PIONEERING 2GEN APPROACHES IN COLORADO

To learn more about Ascend at the Aspen Institute and two-generation approaches, visit:
<http://ascend.aspeninstitute.org>  @aspenscend  /aspenscend



ASCEND NETWORK: AN OVERVIEW

The goal of the Aspen Institute Ascend Network is to mobilize and empower two-generation (2Gen) organizations and leaders to influence policy and practice changes that increase economic security, educational success, social capital, and health and well-being for children, parents, and families. Two-generation approaches meet the needs of and provide opportunities for children and their parents together. The Ascend Network is comprised of more than 200 organizations in 41 states and the District of Columbia working to create a portfolio of 2Gen solutions through best and next practices; innovative policies; evidence and research; and bipartisan political will.

2GEN ACROSS COLORADO

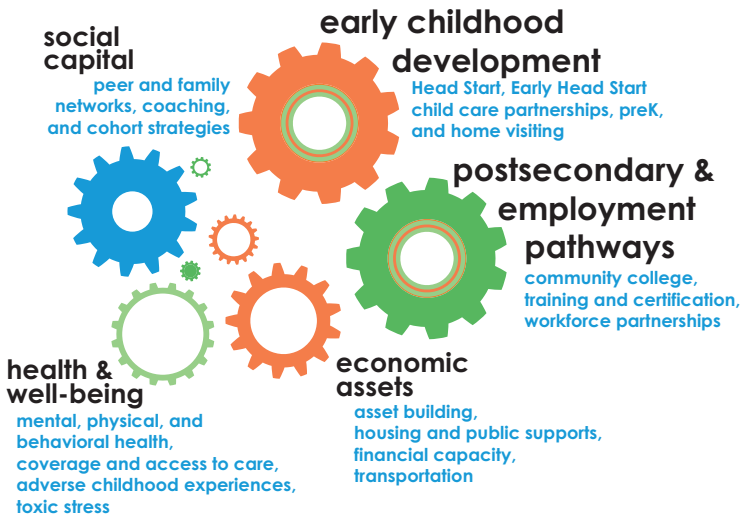
Since 2011, Ascend has worked with leaders across Colorado to advance 2Gen solutions across programs, policies, and philanthropy. Highlights to date include:

- A series of strategic planning sessions across key state and county agencies, resulting in the State Human Services Model: Colorado as a Case Study for Policymakers;
 - The development and implementation of a vision for early childhood leaders and philanthropists in Colorado that applies a 2Gen lens;
 - The launch and implementation of the Colorado Children and Families Health and Human Services Fellowship, which invests in visionary Colorado leaders committed to making Colorado the best place to have a child and sustain a healthy, thriving family.
- Three visionary 2Gen leaders from Colorado selected as Aspen Ascend Fellows (Reggie Bicha, Department of Human Services; Dr. Sarah Watamura, University of Denver; and Roxane White, formerly with Nurse-Family Partnership);

I'm proud of the traction the two-generation approach is getting in Colorado. It makes the most sense to focus population health efforts on our youngest children. However, we can't forget that parents are the most important determinant of a child's health and well-being. So while we work to positively impact a child's quality of life, we must work just as hard to improve the quality of the lives of parents.

— Jeff Kuhr, Mesa County Department of Health

CORE COMPONENTS OF A TWO-GENERATION APPROACH



THE ASCEND NETWORK FOR COLORADO LEADERS

Network Partners receive priority invitation to key Ascend convenings, including Colorado-based roundtables and strategic discussions; targeted support and tools, including peer technical assistance and virtual convenings; and access to the Aspen Institute's online and media platforms. Ascend Network Partners are invited to participate in opportunities to deepen connections, accelerate learning, and leverage the Aspen Institute platform. Network Partners around the country are actively identifying, designing, and scaling: 2Gen models that integrate the five key components of the 2Gen framework for improved outcomes for families;

- Leading-edge policies that blend and braid funding streams to serve families more efficiently and effectively;
- Key messages and tools that equip organizations to move more families toward a path of opportunity;
- Collaborations and partnerships that leverage and align resources.

Ascend at the Aspen Institute is the national hub for breakthrough ideas and collaborations that move children and their families toward educational success and economic security. Are you innovating on behalf of children, parents, and families in Colorado, and want to strengthen your 2Gen approach? To join the Network, please contact Sarah Haight: sarah.haight@aspeninstitute.org.

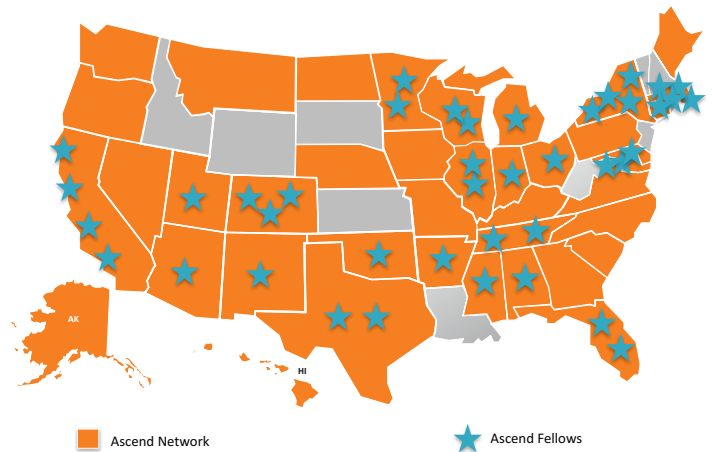
COLORADO NETWORK PARTNERS AND ASCEND 2011-2015 FELLOWS

1. Arapahoe County Department of Human Services
2. The Bell Policy Center
3. Colorado Department of Human Services
4. Community College of Aurora
5. Community Partnership for Child Development
6. Emergency Family Assistance Association
7. Family Resource Center Association
8. Florence Crittenton Services of Colorado
9. Jefferson County Department of Human Services
10. The Manus Foundation – Valley Settlement
11. Mile High United Way
12. Morgridge Family Foundation
13. Nurse-Family Partnership
14. The Haven
15. University of Denver
16. Warren Village

Ascend Fellows:

- Reggie Bicha, Colorado Department of Human Services
- Dr. Sarah Watamura, University of Denver
- Roxane White, formerly with Nurse-Family Partnership and now Morgridge Innovator in Residence with Ascend at the Aspen Institute

Ascend National Network



Empowering parents around their own education directly impacts their child's educational outcomes. [At JeffCo] we really are working to have at least one major outcome for each 2Gen component: Education attainment, credit score, income, school attendance, attendance and participation in group meetings.

— Jessica Hansen, JeffCo Prosperity Project